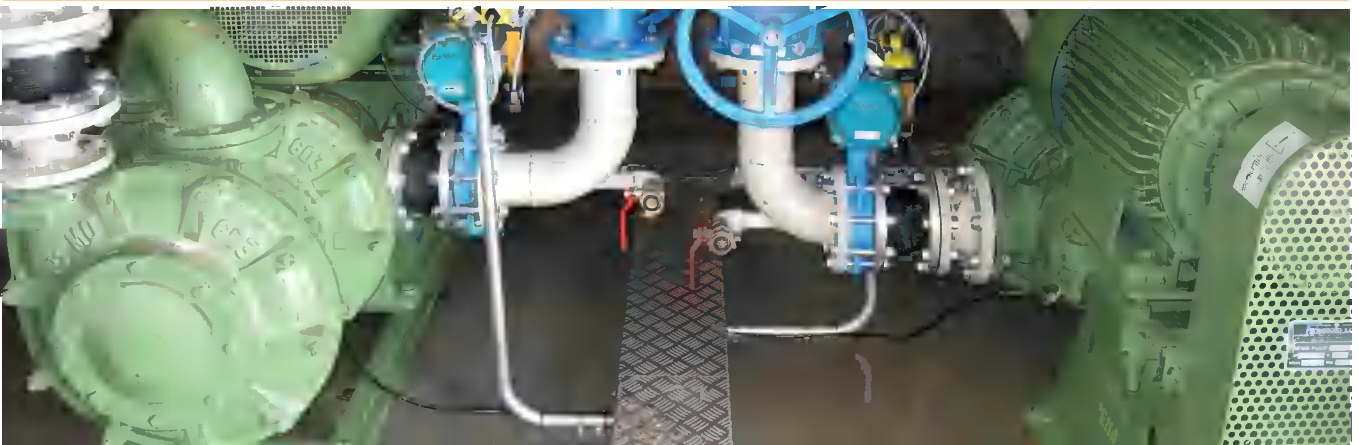
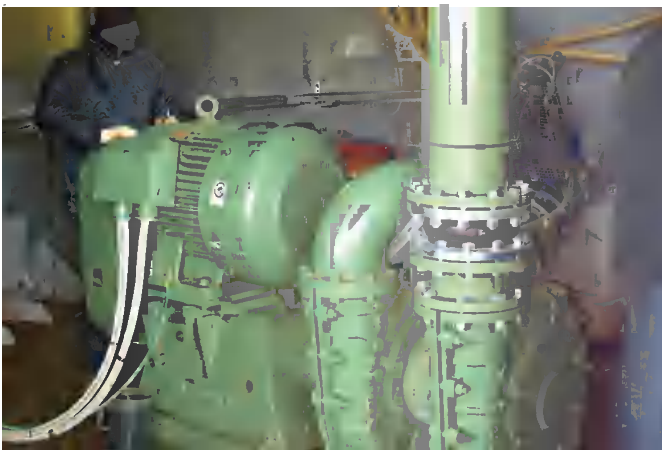


PEMO PUMPS

for **FILTER PRESS**



PEMO PUMPS for filter press

SINGLE , DOUBLE AND TRIPLE STAGE FILTER PRESS FEED PUMPS



- Pemo's Filter Press Feed Pumps are specifically designed for this application and there is little direct competition in this market due to the wide variety of models developed for this purpose.
- The main advantage of the Pemo Filter Press Pumps is the Side Suction on the Horizontal Design. The seal in this design only sees the feed pressure of the feed slurry instead of the high pressure from the discharge of the pump. This allows simple mechanical seal flushing systems to be used. The seal flush system is sealed so no water or sludge will leak during the flush cycle.
- Pemo Filter Press Feed pumps are designed specifically for abrasive and/or corrosive applications using a variety of materials such as rubber lining, Hardalloy PEMO (750-800 HB), Stainless Steel or Hastelloy.
- Capacities when filling the filter press can reach 6613 GPM (1500 m³/h).
- Final Pressure can exceed 294 psi (20 bar) for the Triple Stage and for some Double Stage Models, creating a much dryer cake than single stage pumps can provide.
- Mechanical Seals are all Silica Carbide or Tungsten Carbide.
- The bearings are all specifically designed for filter press applications and are oil lubricated.
- Lubrication of the 2 mechanical seals can be done by use of clean water at 30 psi minimum pressure. It can also be done by use of glycole in a closed pressurized system.
- Some PEMO filter press pumps can also be provided in Submersible or Vertical versions.

PRIMARY MARKETS for PEMO FILTER PRESS FEED PUMPS

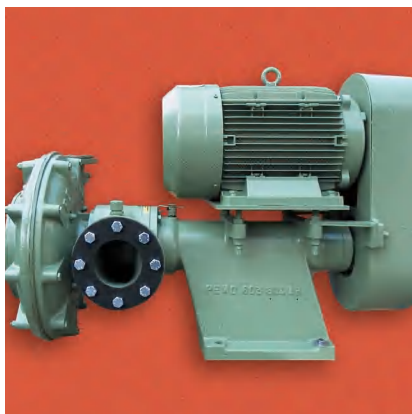


- Mining, Quarries and Mineral Extraction.
- Power Plants.
- Aggregate Industry.
- Stone Industry (Granite and Marble).
- Ceramic Industry.
- Chemical Industry.
- Steel Mills.
- Industrial Wastewater Treatment.



PEMO PUMPS for filter press

the SINGLE STAGE RUBBER-LINED VERSION



- Currently there are 9 different Models available: 302, 403, 503, 603, K125, 1004, P200, I-270, C300.
- Capacities when filling the filter press range from 88-6613 GPM (20 to 1500 m³/h).
- Discharge pressures range from 59 to 147 psi (4-10 bar).
- These pumps are highly recommended for abrasive and corrosive slurry applications.
- Custom designed Pumps can be provided for specific applications.

Pump model	Starting Max Flow		Max Head		Max Pressure	
	(m ³ /h)	(gpm)	(m/H ₂ O)	(ft)	(Bar)	(psi)
302 AO/ABM	20	88	40	131	5	72.5
403 AO/AB-B3	50	225	50	164	6	87
503 AO/AB-B3	60	264	50	164	6	87
603 AO/AB-B55	100	440	60	196	7.5	108.75
K125 AO/AB-B75	180	793	75	246	10	159.5
1004 AO/AB-B75	250	1102	50	164	6	87
P200 AO/AB-B10	560	2469	50	164	6	87
I-270 AO/AB-B10	900	3968	50	164	6	87
C300 AO/AB-B10	1500	6613	50	164	6	87

Table with standard versions of single stage rubber lined PEMO Pumps

the DOUBLE STAGE RUBBER-LINED VERSION



- Currently there are 5 different Models available: 503, 603, K125, 1004, P200.
- Capacities when filling the filter press range from 88-2469 GPM (20 to 560 m³/h).
- Discharge pressures range from 206 to 220 psi.
- These pumps are highly recommended for abrasive and corrosive slurry applications.
- Custom designed pumps can be provided for specific applications.

Table with standard versions of Double Stage rubber lined PEMO Pumps

Pump model	Starting Max Flow		Max Head		Max Pressure	
	(m ³ /h)	(gpm)	(m/H ₂ O)	(ft)	(Bar)	(psi)
503 AO/AB/DC-B5	60	264	120	393	14	203
603 AO/AB/DC-B7	100	440	120	393	15	217.5
K125 AO/AB/DC-B75	180	793	120	393	15	217.5
1004 AO/AB/DC-B10	250	1102	110	360	15	217.5
P200 AO/AB/DC-B10	560	2469	100	328	14	203

PEMO PUMPS for filter press

the VERSIONS with HARDALLOY CASINGS

- Specifically designed for applications with coal slurry and where higher pressures are required.
- Operate at higher temperatures and long cycle times.
- Currently there is 1 model in the Single, Double and Triple stage version, and there are 3 models available in the Single and Double Stage versions.
- Recommended primarily for highly abrasive sludges.
- Model S-FP AO/AB/DC-B55 is the smaller Double and the only Triple Stage model, and it is highly recommended when longer cycle times at high pressure are required. This is more cost effective than expensive positive displacement pumps.
- Custom Designed Pumps for specific applications can also be provided.

Table with standard versions of PEMO Pumps for filter press with Hardalloy casings

Pump model	Starting Max Flow		Max Head		Max Pressure	
	(m3/h)	(gpm)	(m/H2O)	(ft)	(Bar)	(psi)
S-FP AO/AB-B3	60	264	75	246	10	145
603-H AO/AB-B55	100	440	80	262	10	145
K125-H AO/AB-B75	180	793	80	262	10	145
1004-H AO/AB-B10	250	945	70	229	8	116
P200-H AO/AB-B10	560	2469	70	229	8	116
S-FP AO/AB/DC-B55	60	264	140	459	18	261
603-H AO/AB/DC-B75	100	440	140	459	18	261
K125-H AO/AB/DC-B75	180	793	140	459	17	246.5
1004-H AO/AB/DC-B10	250	945	120	393	16	232
1004-HMC AO/AB/DC-B10	250	945	150	492	20	290
P200-H AO/AB/DC-B10	560	2469	120	393	16	232
S-FP AO/AB/TC-B77	60	264	160	525	20	290



Perissinollo s.p.a.

Via Pascoli 17 - 20090 Vimodrone (MI) - ITALY

Ph +39 02 250731 - Fx +39 02 2500371 - peris@pemo.com - www.pemo.com

